

37053 CHERRY ST.

NEWARK, CALIFORNIA



CARLOS SERRANO-QUAN

Listing Agent
CA Lic. #01707584
(415) 608-8409
carlos@sq-re.com
www.sq-re.com/carlos

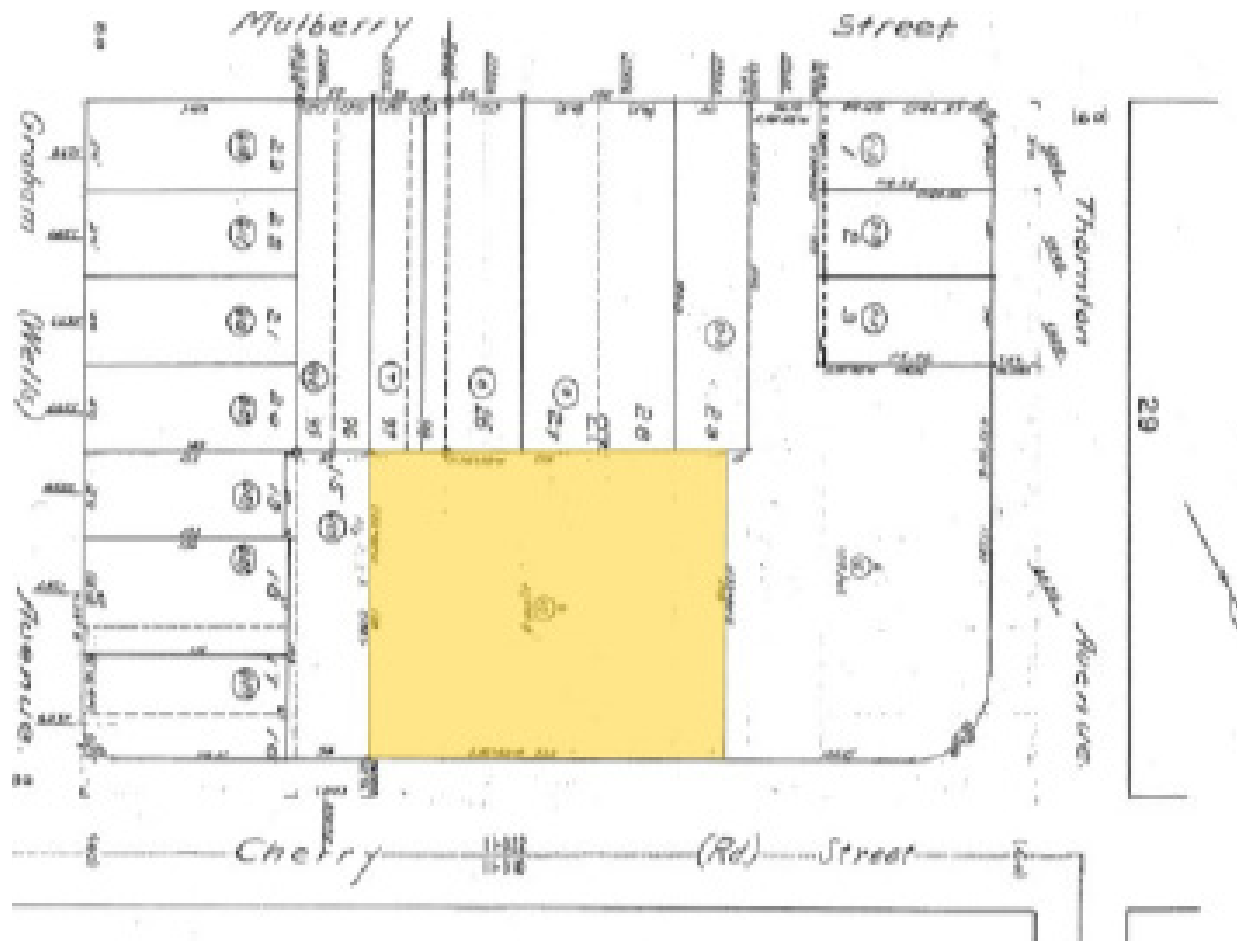


ASHLEY SONG

Listing Agent
CA Lic. #01914909
(415) 572-6376
ashley@sq-re.com
www.sq-re.com/ashley

PLAT MAP

37053 CHERRY STREET | NEWARK | CA



WHAT'S CLOSE BY

37053 CHERRY STREET | NEWARK | CA

Restaurants:

All Star Burgers & Donuts .2mi

Coffee:

Starbucks .3mi

Groceries:

Madeira Discounted Liquors .1mi

Parks:

Civic Center Park .3mi

Schools:

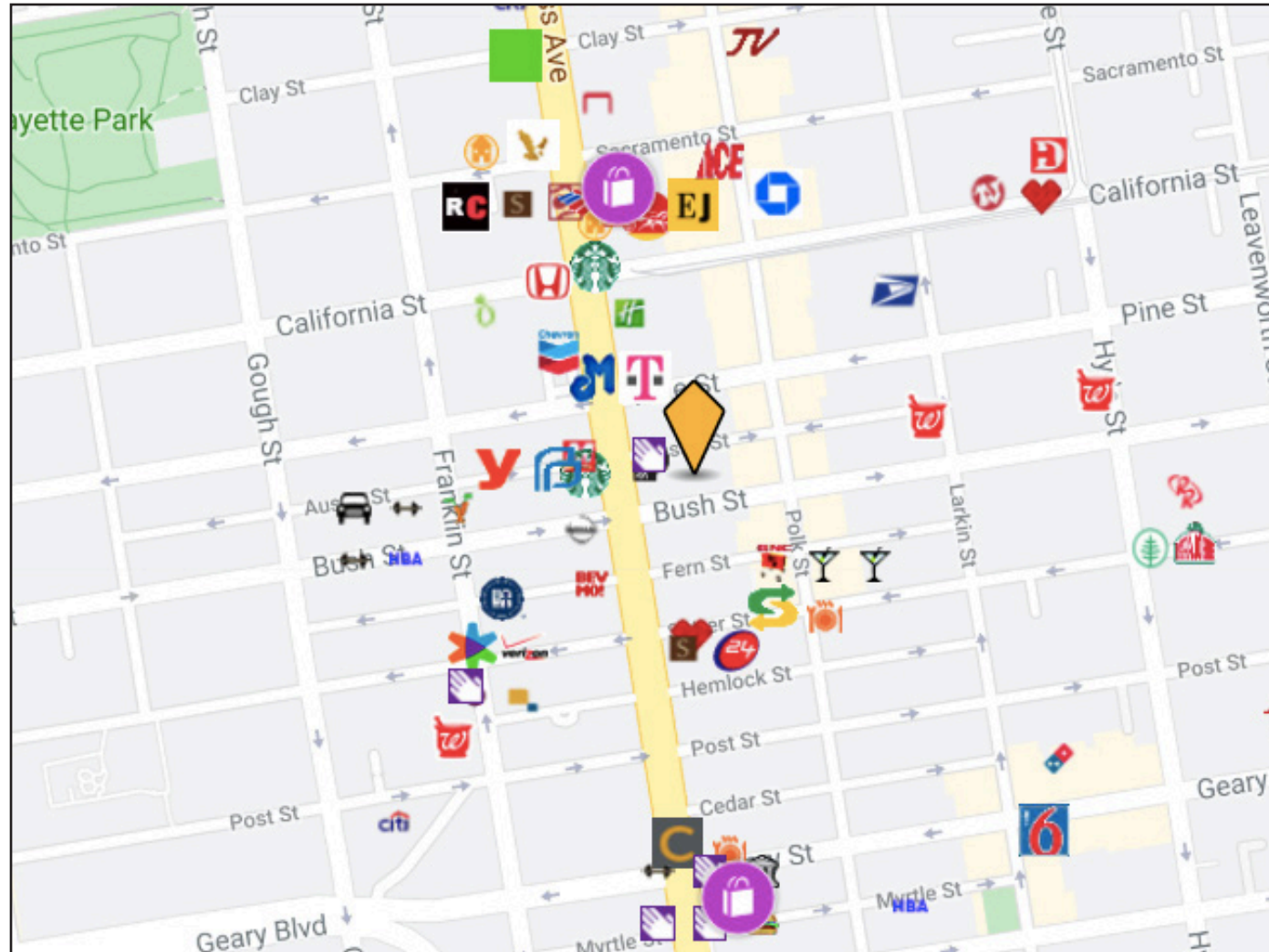
Birch Grove Intermediate .6mi

Shopping:

Norma's Flower Shop .3mi

Entertainment:

Little Manila 1.5mi



PHOTOS

37053 CHERRY STREET | NEWARK | CA



HIGHLIGHTS

37053 CHERRY STREET | NEWARK | CA



- **Lease: \$33/SqFt/Year**
- Walk Score: 65
- 2 story, 22,000+ square foot property on a 41,833 square foot lot, offering a unique combination of charm and outstanding modern potential.
- Building occupies a coveted position 35 miles south of San Francisco next to many high tech hubs, with easy access to Highways 880, 580, and 680.
- Features 16 covered parking spaces and 59 open parking spaces.
- Near a variety of many citywide parks, community centers, restaurants, public transportation, and the NewPark Mall.



SEQUOIA
COMMERCIAL GROUP

FOR MORE INFO, CONTACT:



CARLOS SERRANO-QUAN

PHONE: (415) 608-8409 | EMAIL: CARLOS@SQ-RE.COM

ASHLEY SONG

PHONE: (415) 572-6376 | EMAIL: ASHLEY@SQ-RE.COM